



# VOTER

A monthly publication of the League of Women Voters of Polk County, P.O. Box 934, Lakeland, FL 33802

June 2008  
Volume 08, Issue 5

*The League of Women Voters, a nonpartisan political organization, encourages informed and active participation in government, works to increase understanding of major public policy issues, and influences public policy through education and advocacy.*

## Annual Meeting of May 20



### This Issue

- Thought for the Day
- Annual Meeting
- Board
- Pictures
- Library Update
- Growth Cap Forum
- Gerrymandering
- Calendar

Helen Sears (below) receives token of appreciation from Ann Weeks



### THOUGHT FOR THE DAY:

"Politics is the gentle art of getting votes from the poor and campaign funds from the rich by promising to protect each from the other."

~ Oscar Ameringer

The following officers and directors were elected for the coming year:

President: Ann Weeks	Directors:
Secretary: Susan Lee	Sue Shultz Pete Wesley
Treasurer: Mary Thomas	Paula Mims Jerry Weeks

The new Non-Partisan Policy was ratified by the attendees. Our speaker, David Carmichael, presented some thought-provoking words on the importance of the Judiciary and its workings in Florida.

# Annual Meeting 2008 Pictures

## LEAGUE OF WOMEN VOTERS POLK COUNTY BOARD OF DIRECTORS:

Ann Weeks, President  
648-4127  
[president@lwvpolk.org](mailto:president@lwvpolk.org)

Susan Lee, Secretary  
324-4517  
[Suezq11@verizon.net](mailto:Suezq11@verizon.net)

Mary Thomas, Treasurer  
859-7560  
[maryalicet11@aol.com](mailto:maryalicet11@aol.com)

Sue Schultz, Voter Service—  
Elections  
646-4634  
[sueschultz1@verizon.net](mailto:sueschultz1@verizon.net)

Paula Mims  
686-0356  
[pmmims@aol.com](mailto:pmmims@aol.com)

Joan Verret  
682-7724  
[JoanClaireV@aol.com](mailto:JoanClaireV@aol.com)

Jerry Weeks  
648-4127  
[2weeks@tampabay.rr.com](mailto:2weeks@tampabay.rr.com)

Pete Wesley  
682-2578  
[mjohnandpete@aol.com](mailto:mjohnandpete@aol.com)

### Off-Board Specialists:

Membership, Joan Verret, retaining  
682-7724  
[JoanClaireV@aol.com](mailto:JoanClaireV@aol.com)  
and Ann Weeks, recording  
[membership@lwvpolk.org](mailto:membership@lwvpolk.org)

Judy Walker, Voter Service—Guide  
299-9285  
[judywalker@polkelections.com](mailto:judywalker@polkelections.com)

Fundraising and Government, Lisa  
Parks  
686-6482  
[lparksaicp@aol.com](mailto:lparksaicp@aol.com)

Library, Barbara Stampfl  
687-2787  
[stampfls@tampabay.rr.com](mailto:stampfls@tampabay.rr.com)

Civics Education, Susan Lee  
324-4517  
[Suezq11@verizon.net](mailto:Suezq11@verizon.net)

VOTER Editor and Webmaster,  
Jerry Weeks  
[webmaster@lwvpolk.org](mailto:webmaster@lwvpolk.org)

Website:

[www.lwvpolk.org](http://www.lwvpolk.org)



Joan Verret (under hat) and Barbara Stampfl



Nancy Simmons, Mary Jo Jarrett, Beverly Sidenstick



David Carmichael, Esq



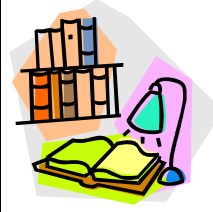
Maria Staszko

## Polk County Library Cooperative Fiscal Update

---

The Polk County Library Cooperative received the legal ability to spend MSTU (Municipal Services Taxing Unit) dollars collected within the NorthRidge CRA for library services in that area effective April 2008. To that end, the Cooperative is pursuing a leasing opportunity with Feltrim Development for their Roseberry Square shopping centre. The Cooperative would like to lease around 5,200 square feet to open a storefront library for the Davenport and Four Corners communities.

The Cooperative continues to be concerned about the funding situation as a whole. As of this time the Cooperative has not received any figures from the County (who has not received any figures from the State) regarding the cuts that will be coming as a result of the passage of Amendment 1 in January. This current fiscal year the Cooperative took the same cuts as the County as a whole did due to the rollback plus 9%. The MSTU for library service went from .25 mil to .2109 mil. In dollars this decreased funding by \$820,000. The result of Amendment 1 may decrease Cooperative



funding by another 10% but this will not be known until at least July, if not September. It should be noted that the County is only cutting Cooperative funding because of actions of the State Legislators. Had these

actions not occurred at the state level there is every reason to believe that there would have been an increase in funding from normal property tax growth.

Along with the cuts in funding from the MSTU, State Aid this year was reduced by 4% resulting in funding of \$337,574. Next year it is proposed that State Aid be reduced by another 4% for an estimated amount of \$309,396.

All library entities throughout the State have received such funding cuts and many library services are being cut. The Polk County Library Cooperative is currently working on a budget for the coming fiscal year. Stay tuned for library service cuts in our County.

By Barbara Stampfl

---

## Growth Cap Forum

### Discussion of proposed Charter Amendment

The Polk Vision Infrastructure Foundation has organized an educational program pertaining to the proposed Growth Cap Charter amendment. The event will provide information from varying viewpoints regarding the proposed amendment that seeks to restrict growth in cities and unincorporated areas of the Polk County.

Representatives from the Growth Cap Coalition, the development/building industry, land use planning and agricultural land ownership will be panelists at this moderated event.

### Growth Cap Forum

Thursday, June 5, 2008

6:00 - 8:00 p.m.

LTB Auditorium  
PCC/USF Lakeland Campus  
3330 Winter Lake Road

Please **R.S.V.P.** by June 2, 2008  
[info@polkvision.com](mailto:info@polkvision.com) or (863) 646-0439

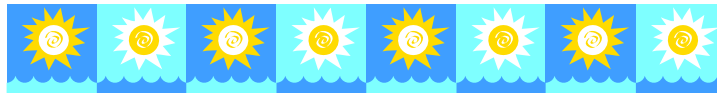


The League of Women Voters Of Polk County **VOTER**

PO Box 934, Lakeland, FL 33802  
863-683-2328  
www.lwvpolk.org

Nonprofit  
Organization  
U.S. Postage  
PAID  
Permit No. 59  
Lakeland, FL 33802

**\* \* \* Redistricting Reform Workshop - July 12 \* \* \***



### Gerrymandering ?



**Gerrymandering** is a form of redistricting in which electoral districts are manipulated for electoral advantage. The figures below represent how election districts can be gerrymandered to change the distribution of legislative seats between the two main parties. In Figure 1, all four districts have an equal division between each party. In Figure 2, the districts have been redrawn to give one party an advantage in three of the four districts.

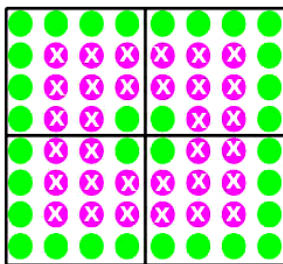


Figure 1

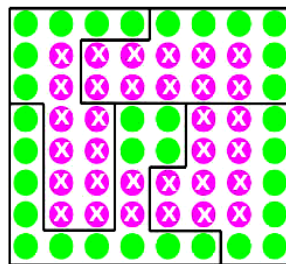


Figure 2

### Calendar

Thursday, June 5:  
Growth Cap Forum (see page 3)  
PCC/USF Lakeland Campus

Tuesday, June 17, noon  
LWV Polk County BOARD Meeting  
United Way, Highland City  
(bag lunch)

\* \* \*

Monday, July 4: Independence Day

Saturday, July 12, 1:00 pm  
Fair Districts Workshop  
Jackson Library, Lakeland

\* \* \*

Tuesday, August 26: Primary Election

\* \* \*

Tuesday, November 4: General Election