



# VOTER

A monthly publication of the League of Women Voters of Polk County, P.O. Box 934, Lakeland, FL 33802

*The League of Women Voters, a nonpartisan political organization, encourages informed and active participation in government, works to increase understanding of major public policy issues, and influences public policy through education and advocacy.*

**August 2008**  
Volume 08, Issue 7

## This Issue

- [Bumper Sticker of the Day](#)
- [Candidate Forums](#)
- [Board](#)
- [Membership Renewal](#)
- [Directory Change](#)
- [Movie](#)
- [Workshop Pictures](#)
- [Volunteers Needed](#)
- [Calendar](#)

## BUMPER STICKER OF THE DAY

**“Stop Repeat  
Offenders  
—  
Don’t Re-Elect  
Them!”**

## 2008 Primary Election



## Candidate Forums



The League of Women Voters of Polk County will sponsor two rounds of Candidate Forums this year to assist voters in learning about the candidates for Polk County elective offices. Primary Election Forums are scheduled for the following dates in August at the:

**County Administration Building, Commission Chambers**  
**330 West Church Street, Bartow**

(TV Broadcasts on Bighthouse Ch 22, Comcast Ch 33, Verizon Ch 20)



**Tuesday, August 12, 2008, 7 p.m.**

### Congressional Candidates:

Ginny Brown Waite, Jim King,  
Carol Castagnero, John Russell, David H Werder

### Legislative Candidates:

Jack English III, Kelli Stargel, Phillip Walker



**Tuesday, August 19, 2008, 7 p.m.**

### County Commission Candidates:

Jason Brown, Bob English, Don Gifford, Blaine Gravitt,  
John Shamp, Ed Smith,  
Chris Dowdy, Stan Goudy, Sam Johnson, Ricky Shirah, Jacquelyn Smith



**Thursday, August 21, 2008, 7 p.m.**

### Property Appraiser Candidates:

Marsha Faux, Rusty Boedicker

### School Board Candidates:

Brenda Reddout, Dick Mullenax

**LEAGUE OF WOMEN VOTERS  
POLK COUNTY  
BOARD OF DIRECTORS:**

Ann Weeks, President  
648-4127  
[president@lwvpolk.org](mailto:president@lwvpolk.org)

Susan Lee, Secretary  
324-4517  
[secretary@lwvpolk.org](mailto:secretary@lwvpolk.org)

Mary Thomas, Treasurer  
859-7560  
[treasurer@lwvpolk.org](mailto:treasurer@lwvpolk.org)

Sue Schultz, Voter Service—  
Elections  
646-4634  
[voterservice@lwvpolk.org](mailto:voterservice@lwvpolk.org)

Paula Mims  
686-0356  
[pmmims@aol.com](mailto:pmmims@aol.com)

Joan Verret  
682-7724  
[JoanClaireV@aol.com](mailto:JoanClaireV@aol.com)

Jerry Weeks  
648-4127  
[2weeks@tampabay.rr.com](mailto:2weeks@tampabay.rr.com)

Pete Wesley  
682-2578  
[mjohnandpete@aol.com](mailto:mjohnandpete@aol.com)

**Off-Board Specialists:**

Membership, Joan Verret, retaining  
682-7724  
[JoanClaireV@aol.com](mailto:JoanClaireV@aol.com)  
and Ann Weeks, recording  
[membership@lwvpolk.org](mailto:membership@lwvpolk.org)

Judy Walker, Voter Service—Guide  
299-9285  
[judywalker@polkelections.com](mailto:judywalker@polkelections.com)

Fundraising and Government, Lisa  
Parks  
686-6482  
[lparksaicp@aol.com](mailto:lparksaicp@aol.com)

Library, Barbara Stampfl  
687-2787  
[stampfls@tampabay.rr.com](mailto:stampfls@tampabay.rr.com)

Civics Education, Susan Lee  
324-4517  
[Suezq11@verizon.net](mailto:Suezq11@verizon.net)

VOTER Editor and Webmaster,  
Jerry Weeks  
[webmaster@lwvpolk.org](mailto:webmaster@lwvpolk.org)

Website:

[www.lwvpolk.org](http://www.lwvpolk.org)

## Be Sure To Renew Your Membership During This Exciting Election Year!

**Don't miss out on any of the excitement -  
Send your dues in now while you're thinking about it.**

There has been no increase in dues this year. Dues are \$50 for an individual, \$25 for an additional member in the same household and \$40 for students

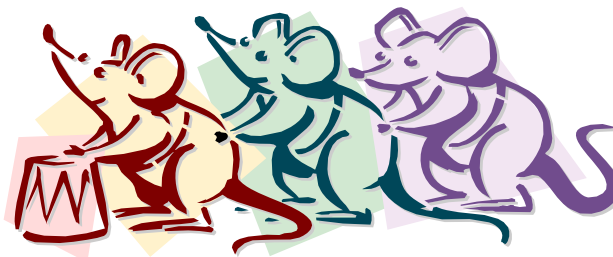
The Board has approved a new limited Membership Category for **High School Students** with dues of **only \$10**. These members would be associated with LWV Polk County only and would not have state or national benefits.

**Looking for a gift for a friend?** Send them a gift of League membership. A certificate acknowledging the gift membership can be sent to you or to the recipient. For more information, contact Ann Weeks at 648-4127 or at [membership@lwvpolk.org](mailto:membership@lwvpolk.org).

The benefits to full membership in the League include: *The National Voter*, *The Florida Voter*, and the *Polk County Voter* as well as access to member information on the League website, alerts on breaking actions locally and on Capitol Hill, and many opportunities to learn about and get involved in current issues.

Please send your payment by September 30 to:

LWV of Polk County  
P.O. Box 934  
Lakeland, FL 33802-0934.



### Membership Directory Change

Please make the following change to your  
2008 Membership Directory.

**Sue Bromwell**

E-mail address: [s.bromwell@gmail.com](mailto:s.bromwell@gmail.com)

Cell phone no.: (772) 559-7256



## MUST-SEE MOVIE: *Iron Jawed Angels*

With Hilary Swank, Frances O'Connor, Julia Ormond, Anjelica Huston  
Defiant, Brilliant, Unstoppable Young Women!  
Lead, Follow or Get Out Of The Way.

On Saturday, September 20, The League of Women Voters of Polk County will screen this powerful film about the young activists, Alice Paul and Lucy Burns who took the

women's suffrage movement by storm, putting their lives at risk to help American women win the right to vote.

**Clear your calendar!**

---

### Fair Districts Workshop Pictures



Caroline Eammons-Schramm explains Fair Districts Florida proposed reforms at the Workshop on July 12.





The League of Women Voters Of Polk County **VOTER**

PO Box 934, Lakeland, FL 33802  
863-683-2328  
www.lwvpolk.org

Nonprofit  
Organization  
U.S. Postage  
PAID  
Permit No. 59  
Lakeland, FL 33802

**\*\*\* Candidate Forums: Aug 12, 19 & 21 \*\*\***

## Candidate Forums Need Volunteers



We need volunteers to serve as greeters, questioners, question gatherers and timekeepers. In addition to the August dates, the tentative schedules for the General Election Forums are **October 21, 28 & 30.**

Help make the LWV of Polk County a vibrant organization by volunteering.

Please call Sue Schultz to volunteer or with any questions to ask at the Forums at 646-4634 or email her at [voterservice@lwvpolk.org](mailto:voterservice@lwvpolk.org).



## Calendar

- Tuesday, Aug 12, 7:00 pm  
**Congressional & Legislative Candidates Forum**, County Admin Bldg, Commission Chambers, 330 W Church St, Bartow.
- Tuesday, Aug 19, 7:00 pm  
**County Commission Candidates Forum**, County Admin Bldg, Commission Chambers, 330 W Church St, Bartow.
- Thursday, Aug 21, 7:00 pm  
**Property Appraiser & School Board Candidates Forum**, County Admin Bldg, Commission Chambers, 330 W Church St, Bartow.
- Tuesday, August 26: **Primary Election**  
\*\*\*
- Saturday, Sep 20, 1:00 pm  
**Movie Screening: *Iron Jawed Angels***
- Tuesday, Sep 23, noon  
**LWV Polk County BOARD Meeting**  
\*\*\*
- Tuesday, November 4: **General Election**